



**“A summary of the Impacts of the Strategic Search Area
approach to windfarm development in Wales”**

**Mike Paffey
Senior Development Manager,
Acciona Energy UK Ltd**

BWEA30

21-23 October 2008 London

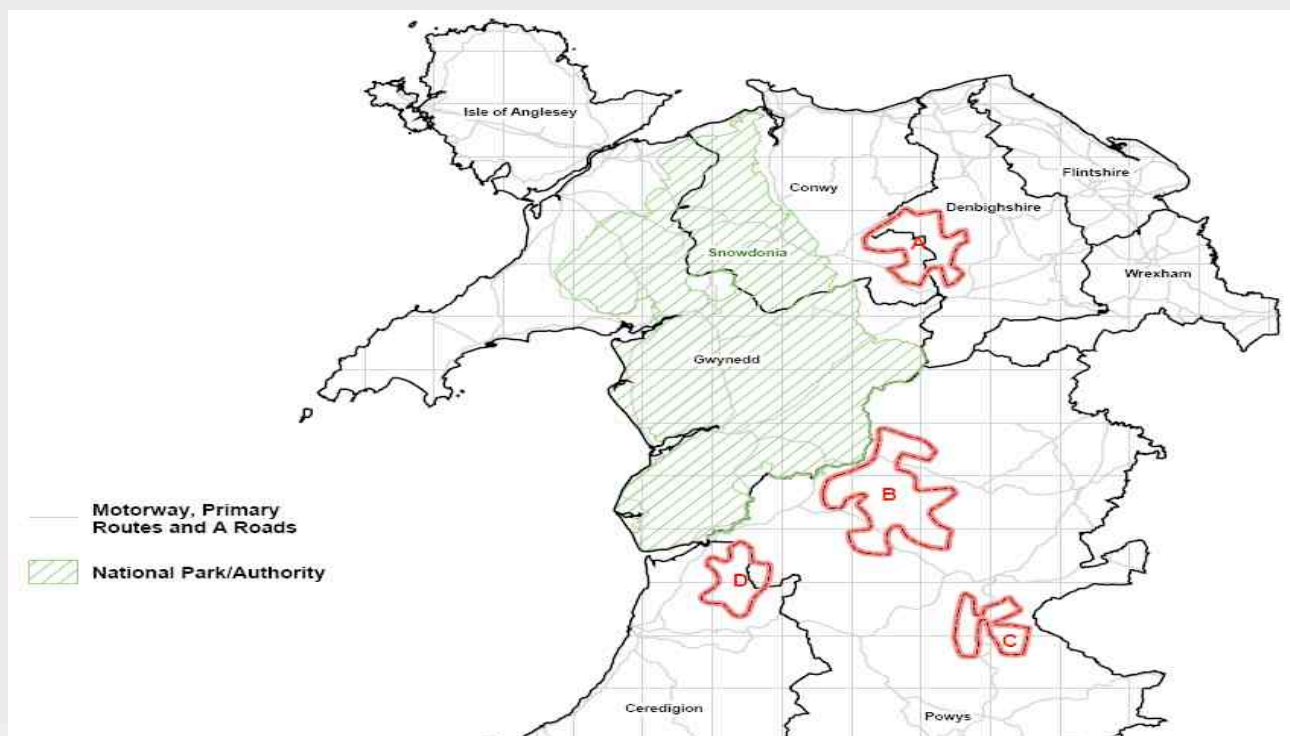


TAN8

- Technical Advice Note 8 (2005)
 - Supplemental Advice to Planning Policy Wales
 - Ministerial Interim Planning Policy Statement
 - Sets targets for development of Renewable Electricity Generation by 2010
 - 800MW from Onshore Wind
 - 200 MW from offshore and other technologies

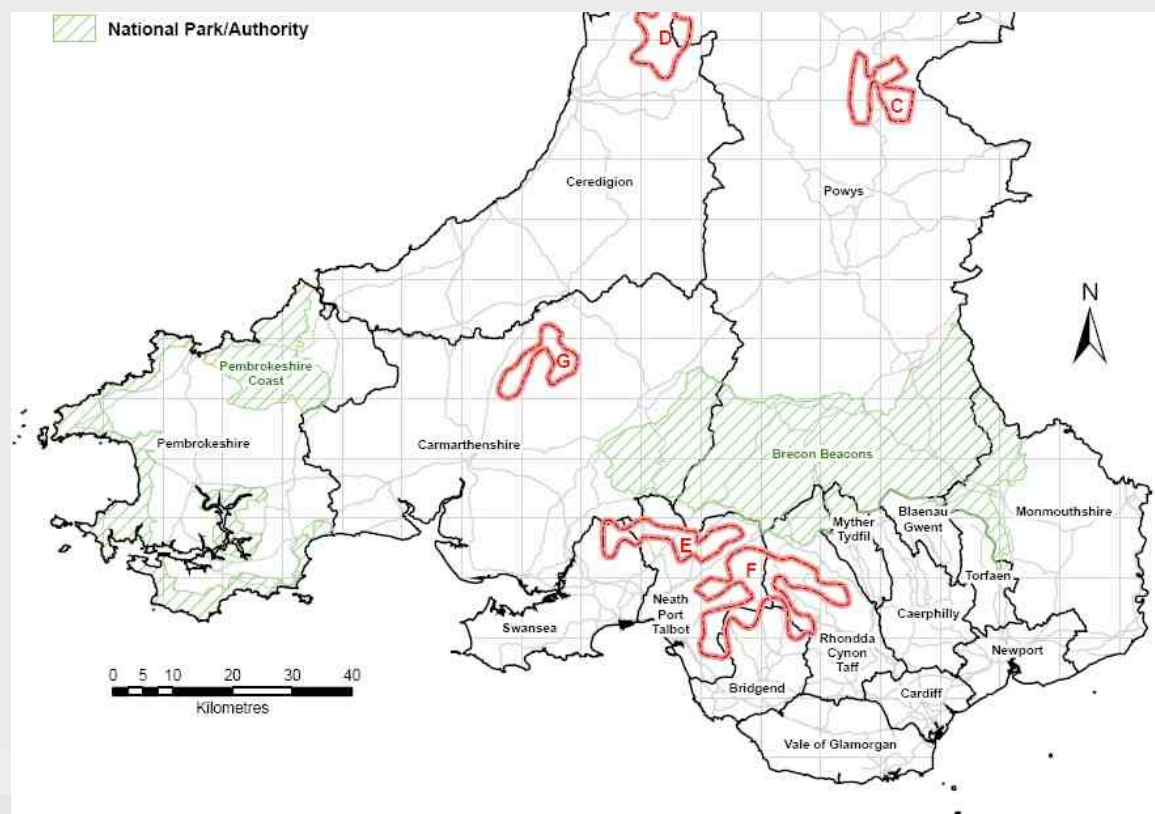


Tan 8 (2005) Strategic Search Areas – Mid/ North Wales





Tan 8 (2005) Strategic Search Areas – South Wales





TAN8

- “local planning authorities are best placed to assess detailed locational requirements...in the light of local circumstances.
- “broad brush scale”
- “not all ...land ...may be technically, economically and/or environmentally suitable for major wind power proposals”
- Encourages Local Planning Authorities to undertake local refinement within each of the SSA's in order to guide and optimise development.



TAN 8 Indicative Targets

Strategic Search Area	Rated Capacity (MW)	Rated Capacity Output (MW) Garrad Hassan Report Maximum Theoretical Capacity	Final TAN 8 Totals (MW)
A- Clocaenog Forest	200	212	140
B-Carno North	200	430	290
C-Newtown South	100	98	70
D-Nant-y-Moch	100	212	140
E- Pontardawe	100	152	100
F-Coed Morgannwg	350	430	290
G-Brechfa Forest	150	132	90
Total	1200	1666	1120



TAN8 – Stages of Development

- Draft Tan 8 (2004) – Indicative SSAs shown
- TAN8 (2005) and MIPPS – with refined SSA's
- Local Planning Authority refinement (2005 - ?) - preparation of Special Planning Guidance and reduction/amendment to the SSAs





Problems with Strategic Search Areas

- Cumulative Impacts
 - Noise
 - Grid
 - Transport
- Delay capacity coming online





Strategic Search Areas - the Way Forward?

WAG – Energy Route Map – Make Wales self sufficient with Renewable Energy!

- Maintain the current SSA's but maximise potential
- New SSA's if necessary (delays?)
- Relax approach to development outside the SSA
- Remove the need for LPA's to do further refinement.





THANKYOU FOR LISTENING!

Mike Paffey
Senior Development Manager,
Acciona Energy UK Ltd

info@acciona.uk.com

BWEA30

21-23 October 2008 London